



Customer Benefit From Icesource



020-39199220



sale@icemakerchina.com



www.icesourcegroup.com



Building 101, No.44, Qianfengbei Road, Shiqi Town,
Panyu District, Guangzhou, China.



Website



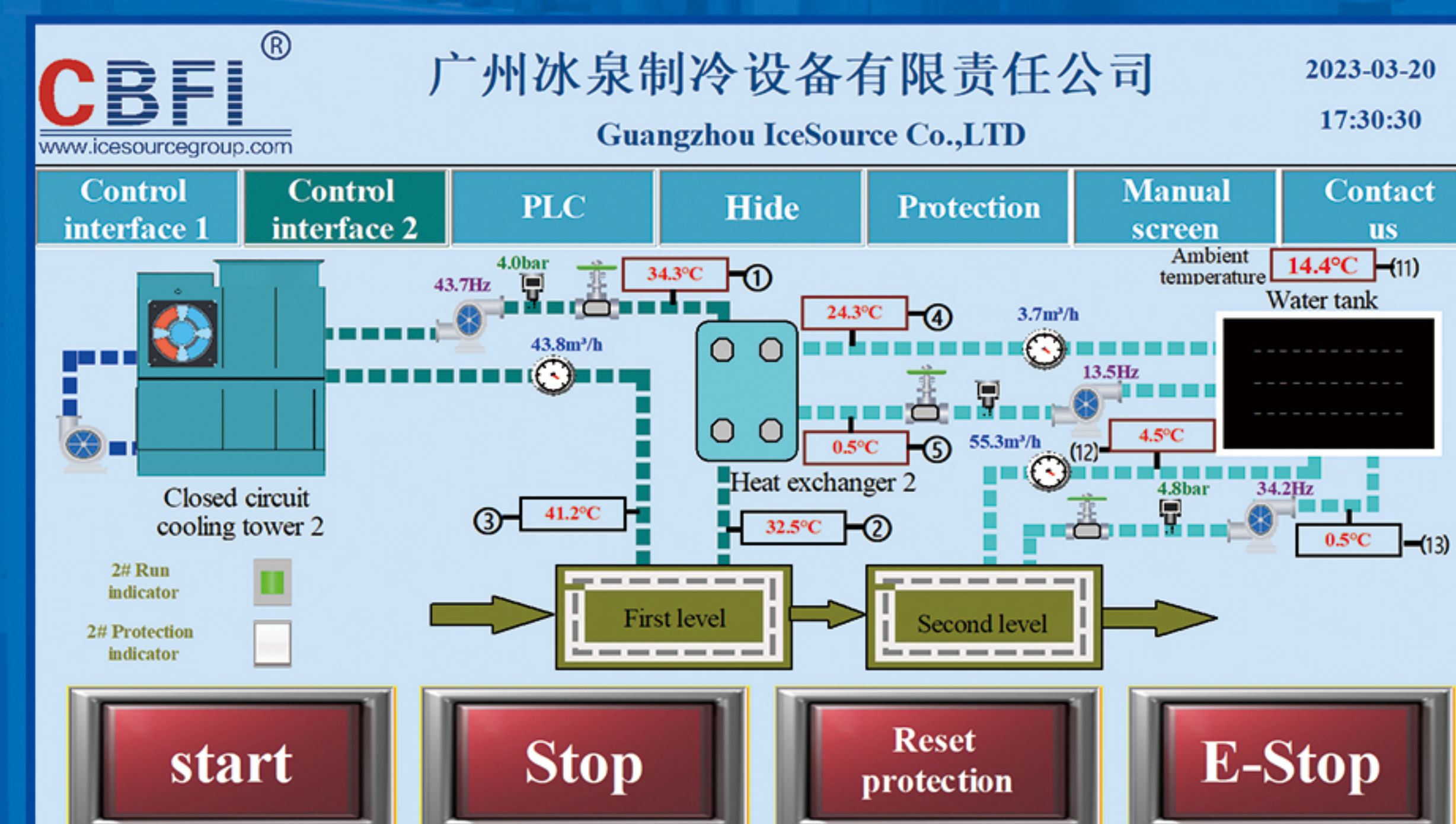
Providing ice water supply on demand



Capable of supplying water at constant pressure and temperature
in accordance with end pressure, temperature, and flow requirements



Open-type double-sided ice-making evaporator
poses no risk of ice expansion and rupture



Water supply temperature can go as low as 0.5 degrees

CBFi®

0°C
ICE WATER
SOLUTION



PLC Central Control Box



Evaporative Cooler



Ice Water Unit



PRODUCT ADVANTAGES



Efficient

A three-level water temperature working condition improves cooling efficiency and reduces cooling energy consumption. It saves 52% more than a conventional chiller system, and under full-load production conditions, the investment cost can be fully recovered within three years.

Stable

High-temperature stage ice water compensation, low-temperature phase-change heat exchange, flow adaptability, stable working conditions, and stable food cooling quality.

Fast

Truly adopts ice-water mixture, with rapid phase-change cooling, large heat exchange, fast material cooling, effectively preventing the "Maillard reaction."

Safe

Open-type ice maker and hot air circulation ice harvesting patent technology, the evaporator has no risk of ice blockage and pipe expansion, no mechanical moving parts, safe and worry-free to use.

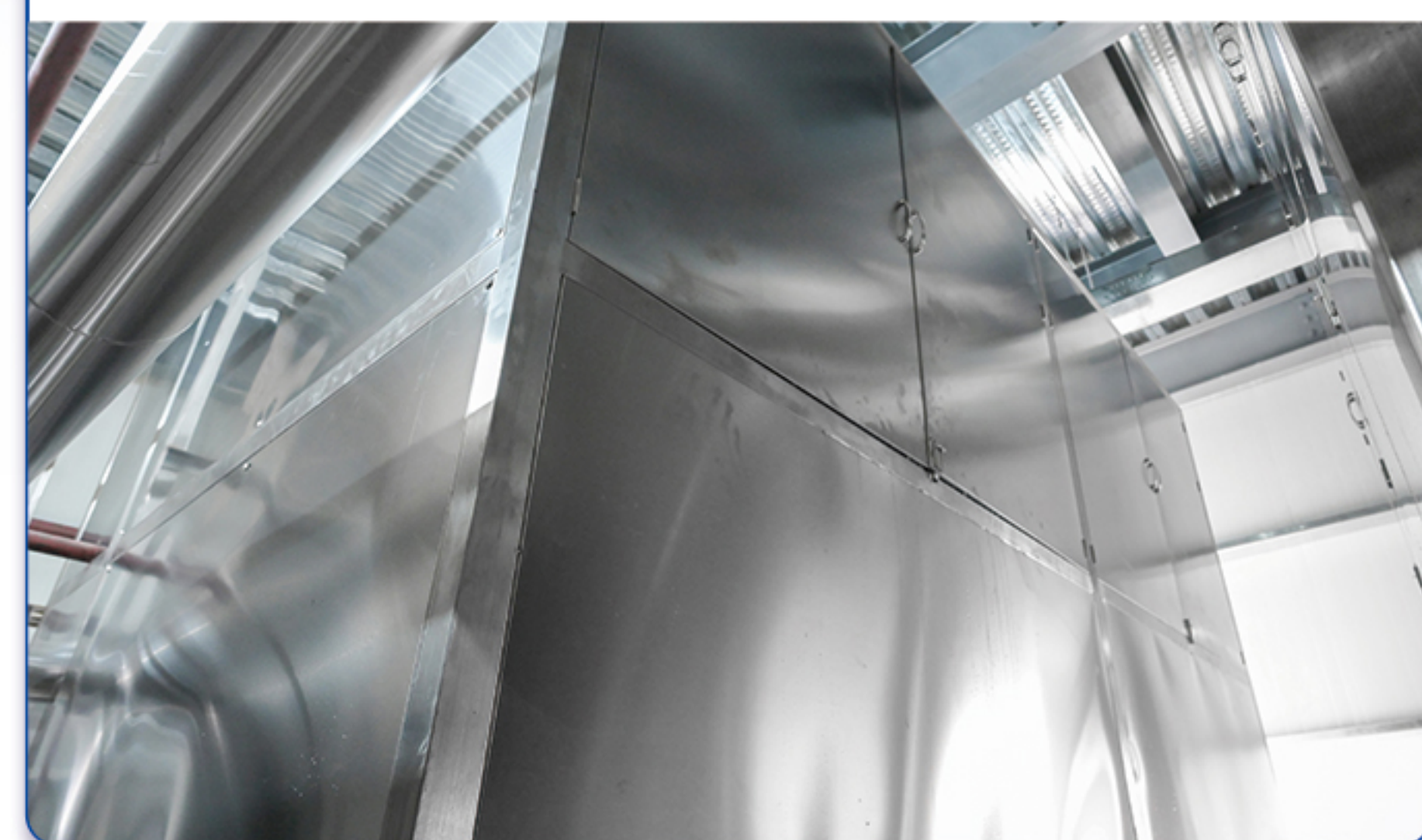
Intelligent

Using CBFI-IOT self-control cloud system, it can realize intelligent operation, automatic self-inspection, remote monitoring, and hierarchical authority management functions.

Frequency Conversion Water Pump



Evaporator



Water Storage Tank

