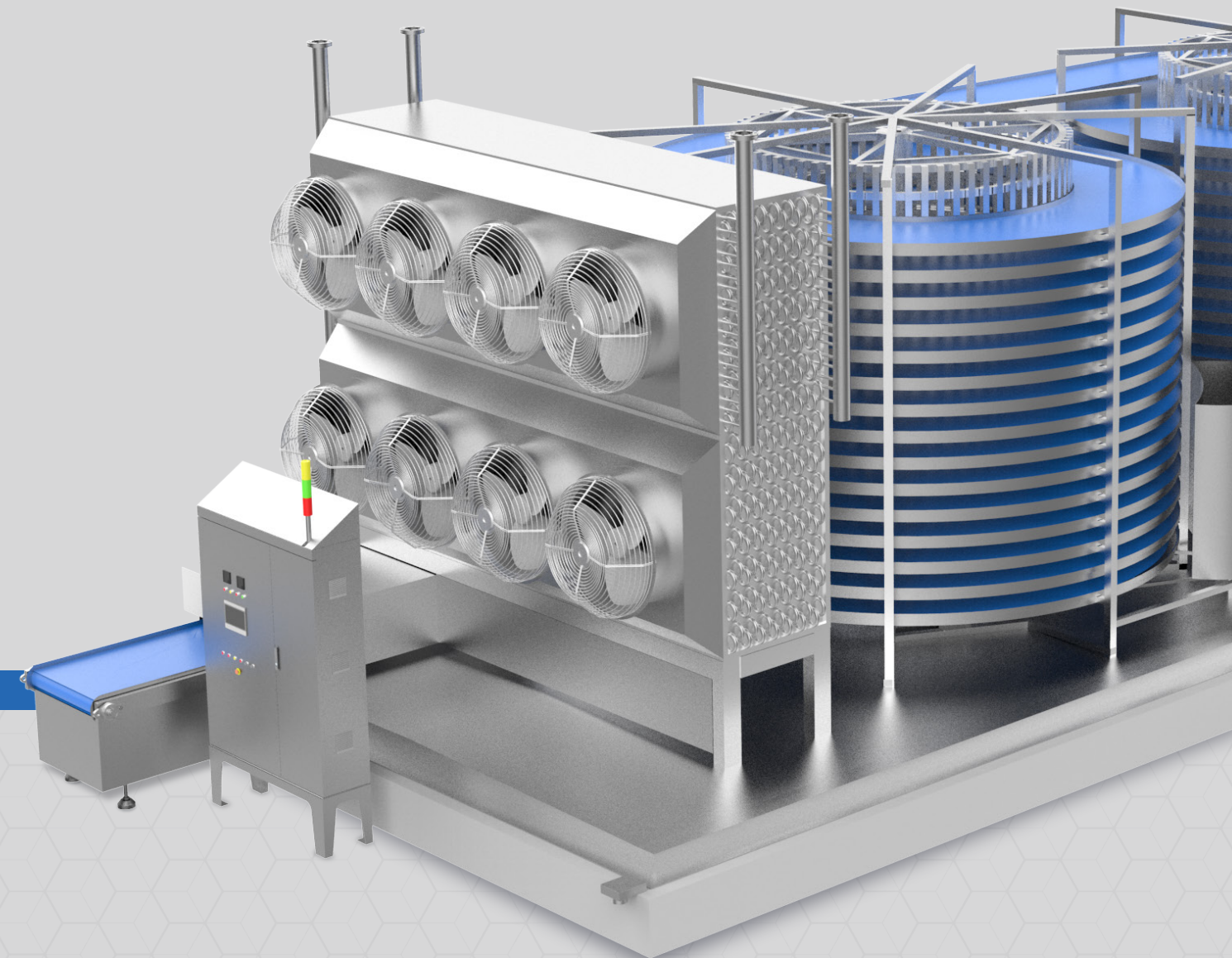




FREEZER

MAKE EACH FROZEN
FOOD MORE VALUABLE

QUICK FREEZING SOLUTION



CBFI[®]

Tel: 020-39199220

www.icesourcegroup.com www.cbfi-quickfreezer.com E-mail: sale@icemakerchina.com
Address: Building 101, No. 44, Qianfeng North Road, Shiqi Town, Panyu District, Guangzhou, China

CBFI[®]

WWW.CBFI-QUICKFREEZER.COM



TABLE OF CONTENTS

| | |
|----|--------------------------------|
| 04 | Company Introduction |
| 08 | Quick freezer product features |
| 12 | Transmission system design |
| 14 | Single spiral quick freezer |
| 16 | Double spiral quick freezer |
| 18 | Tunnel quick freezer |
| 20 | Fluidized quick freezer |
| 24 | Integrated quick freezer |
| 26 | Customer Cases |
| 28 | Cooperation Clients |
| 30 | Factory Introduction |

Guangzhou Icesource Co, Ltd.

It is a comprehensive refrigeration equipment supplier specializing in the research and development of medium and low-temperature refrigeration system technology and quick-frozen food freezing technology. The company's research and development began in 2004 and was established in 2010. It is committed to providing corporate customers with complete sets of quick freezing systems, ice making systems, refrigeration and freezing, cold chain food equipment and cooling and cooling engineering solutions.

As a nationally recognized high-tech enterprise, a Guangdong Province "Specialized and New" enterprise, and a United Nations cold chain engineering equipment supplier, we have accumulated rich experience in food quick-freezing technology, from project conception to design and cost. , equipment production, engineering installation, commissioning and delivery, technical training, after-sales service and operation data detection, etc. provide full-process services. Products are widely used in various types of food processing, distribution and storage.

We always adhere to the core of "Customers Benefit from Icesource" and are committed to helping customers gain competitiveness in the fierce market environment. We look forward to working with you to create a better future!



R&D DEBUT

- Our company established the technical research and development department of quick freezing project
- Master the details of quick-frozen food technology

2004
YEAR

IN-DEPTH SCIENTIFIC RESEARCH

- Was rated as "National High-tech Enterprise" (2015-2025 for 10 consecutive years)
- Was rated as "Guangzhou Enterprise Research and Development Organization" enterprise

2011
2016
YEAR

MARKET RECOGNITION

- Become a registered supplier of the United Nations Global Market
- Was rated as "Best Employer Enterprise in Guangdong Province"
- Reached a strategic cooperation with the international compressor giant Bitzer (2019-2022 for 4 consecutive years)
- Was awarded the "Most Influential Brand Award" by Guangzhou Fishery Expo
- Elected as the "Vice President Unit of Guangdong Cold Chain Association"

2019
2020
YEAR

CONSTRUCTION PHASE

- After years of precipitation in refrigeration technology, our refrigeration technology is far ahead of domestic refrigeration counterparts
- Through systematic research and development and production, we have successfully provided quick-freezing services for many food companies in Southeast Asia

2005
2010
YEAR

STRENGTH RECOGNITION

- Recognized as "Guangdong Ice Making Equipment Engineering Technology Research Center" by Guangdong Provincial Department of Science and Technology
- Passed the national "Intellectual Property Management System" certification

2017
2018
YEAR

CERTIFICATION BLESSING

- Obtained the European standard international certification "five-star after-sales service certification" certificate
- Obtained the MD directive certificate and the PED directive certificate (product equipment enters the EU market without hindrance)
- Obtained the "National High-tech Enterprise" certification for six consecutive years
- Passed the special equipment qualification certification of "Pressure Vessel Pipeline Manufacturing" and "Industrial Pipeline Installation (GC2)" (rarely in China)
- Obtained the "China Equipment Maintenance and Installation Enterprise Ability Level Certificate"
- Obtained the "specialized, special and new" small and medium-sized enterprise qualification certification in Guangdong Province
- Obtained the "Certificate of Evaluation of the Integration of Industrialization and Industrialization Management System"

2021
2025
YEAR

NATIONAL HIGH-TECH ENTERPRISE CERTIFICATE

2015-2025 YEAR

Obtained the high-efficiency technology of Guangdong Province three times in a row for 10 years Service Enterprise and Outstanding Enterprise in Guangdong Province



High-tech Enterprise (2024)



High-tech Enterprise (2021)



High-tech Enterprise (2018)



Specialized special new enterprise



Excellent company



Vice president

FULL MARKS FOR SUBSTANTIVE ACHIEVEMENT



Pressure vessel production license



Industrial piping installation license



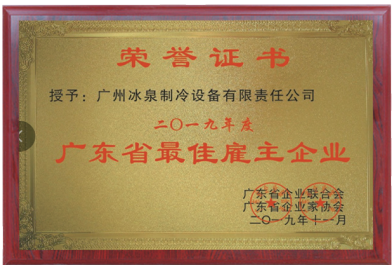
Safety production license



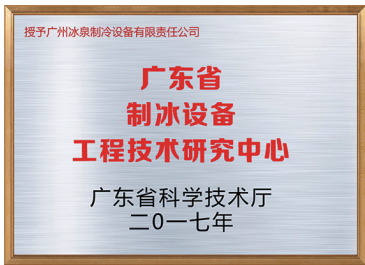
Integration of Informatization and Industrialization



Five-star after-sales service certificate



The Best Employer in Guangdong Province (2019)



Ice-making Equipment Engineering Technology Research Center



Standing director unit of Guangdong province



ISO 19001 quality management system



ISO 18001 occupational health and safety management system



ISO 14001 environmental management system



The United Nations has established a purchaser



Member unit of china refrigeration society



Business license of Guangzhou icesource

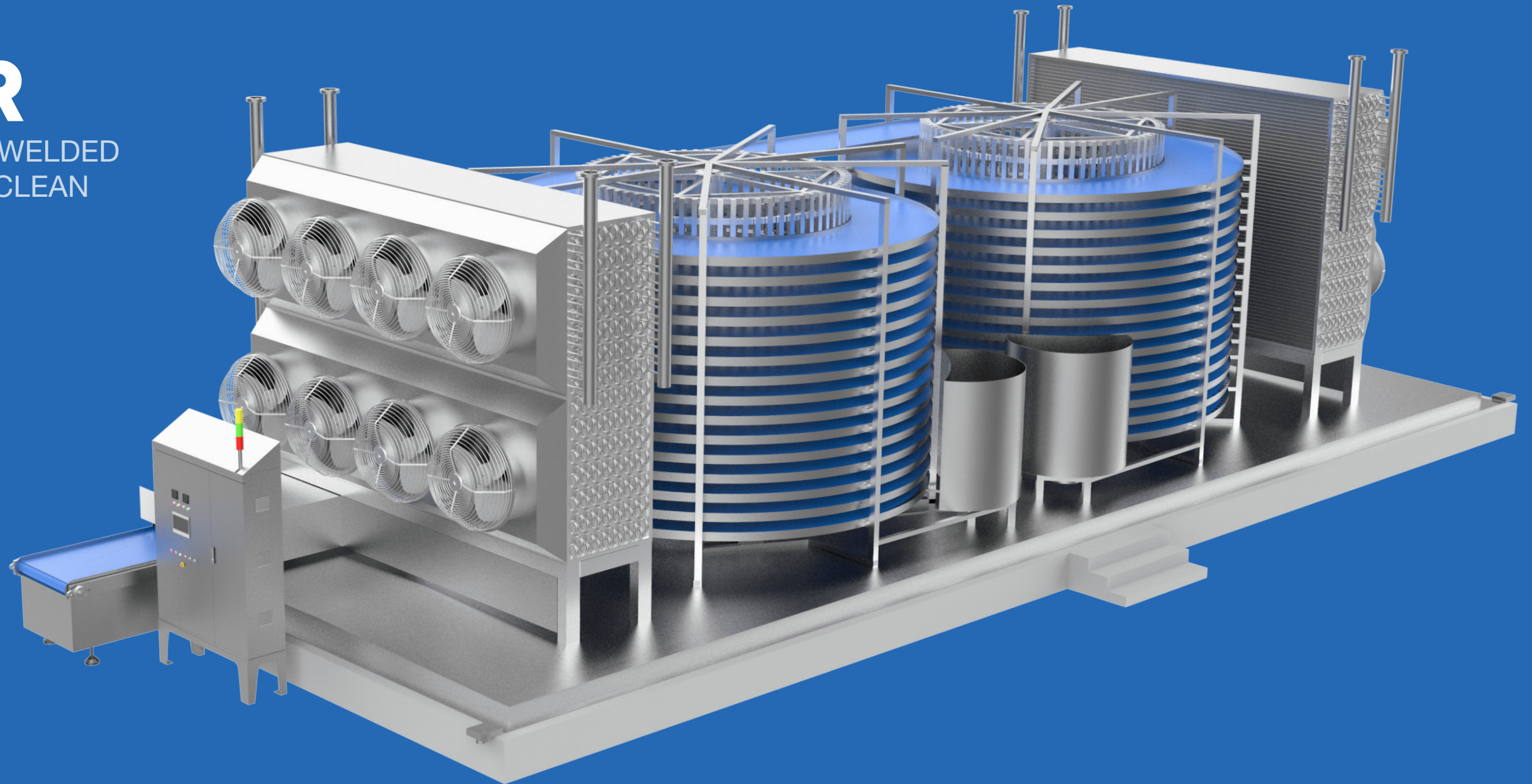
FREEZER

FULLY WELDED, FULLY WELDED
STRUCTURE, EASY TO CLEAN

HEALTH AND SAFETY

ENERGY SAVING

EFFICIENT FREEZING



CONCENTRATE
ON QUALITY



FOCUS ON
INNOVATION



DEDICATED
SERVICE



LEAD
FRESH LIFE



HIGH
PRODUCTIVITY



HIGH
EFFICIENCY

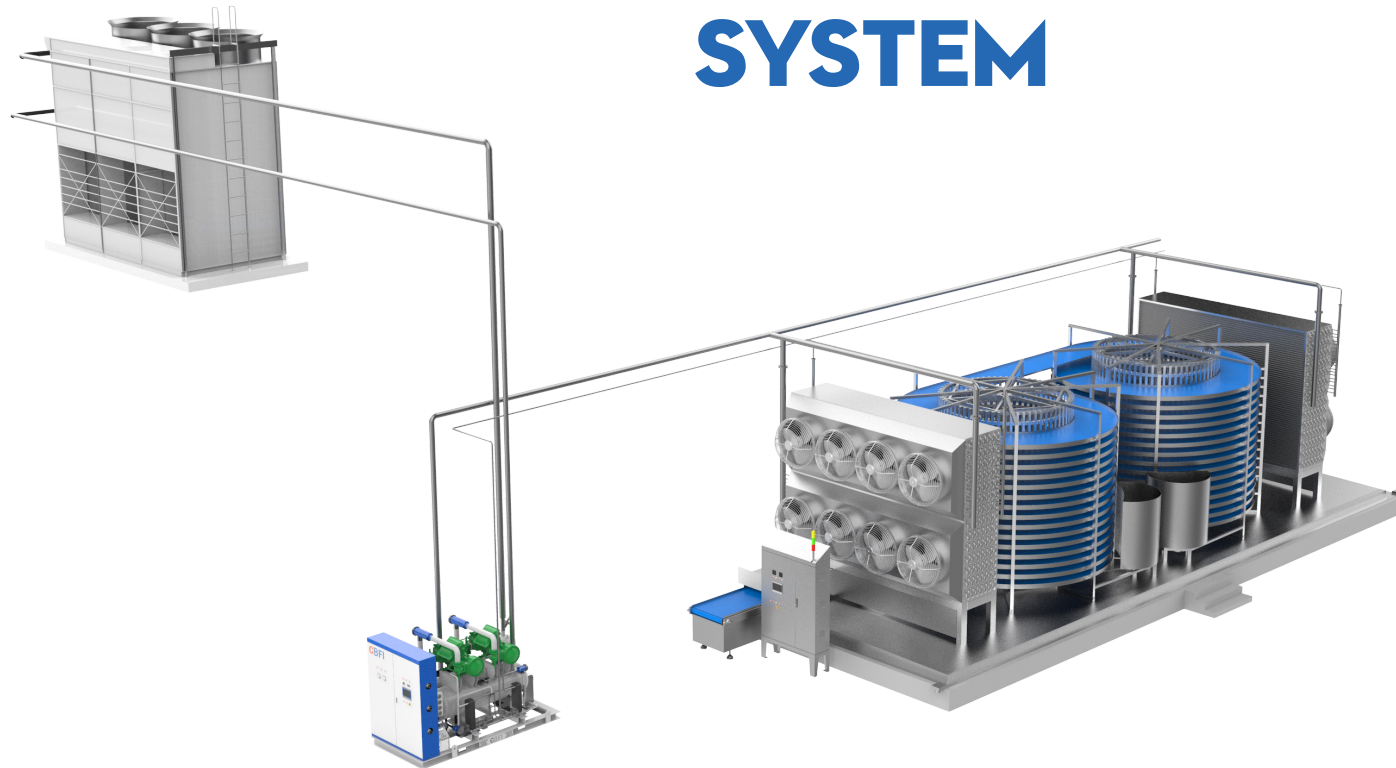


STABLE
OPERATION



WIDE
APPLICATION

DOUBLE SPIRAL QUICK FREEZER SYSTEM



MODERN ROTATING CAGE EQUIPMENT TO ACHIEVE REAL CAPACITY

Adopting modern manufacturing technology, including advanced automation equipment, high-precision machining and advanced control system, the rotating cage equipment can reach a diameter of 5 meters, a mesh belt width of more than 1 meter and a number of layers of more than 30 , with real high production capacity. It not only achieves modern production, but also brings more efficient production methods and higher output.



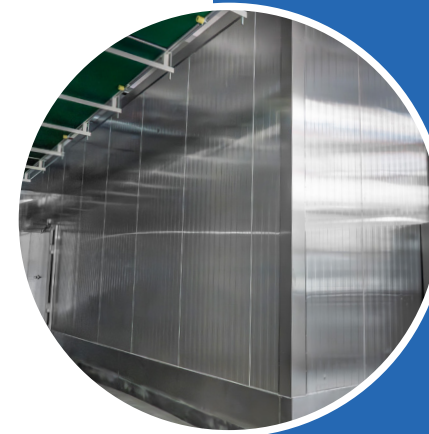
EFFICIENT

Optimizing the coil circuit of the evaporator and designing the air duct reasonably can ensure the high efficiency of heat exchange and improve the performance of refrigeration equipment. The rational design scheme ensures the efficient operation of the evaporator and air duct, while reducing maintenance and production costs.



STABLE OPERATION

The storage board adopts advanced production technology and cooperates with the environmentally friendly production process to ensure that the storage body has a stable and reliable thermal insulation effect , to fully meets the customer's requirements.



WIDE APPLICATION

Committed to providing efficient, reliable and multi-functional quick-freezing equipment to achieve the goal of "everything can be frozen", Adopting advanced condensation technology and rapid freezing technology, not only can adapt to a variety of conventional food freezing needs, but also can adapt to many new food freezing needs.





EXCELLENT CAGE DRIVE SYSTEM DESIGN

ONLY FREQUENCY CONVERSION

The mesh belt operation adopts frequency conversion stepless speed regulation

STAINLESS STEEL STRUCTURE

All 304 stainless steel structure, meet the large load, long time operate , easy maintenance

LARGE SPROCKET DRIVE

Advanced three-drive synchronous control technology



HIGH QUALITY STAINLESS STEEL SCREW MESH BELT

The mesh belt has a high ventilation rate, which improves the freezing efficiency of the product. Customized mesh belt is available to meet the freezing needs of different products. The mesh belt is made of food-grade 304 stainless steel spring wire, which has high strength and longer service life. The mesh belt's structure is open for easy cleaning. The optional range of mesh belt' width: from 520mm to 1372 mm.

WIDE RANGE OF APPLICATIONS

It can be customized according to needs and applied to different frozen products.



Prepared food



Bakery products



Meat and poultry processing



Fruit and vegetable processing



Ice cream processing

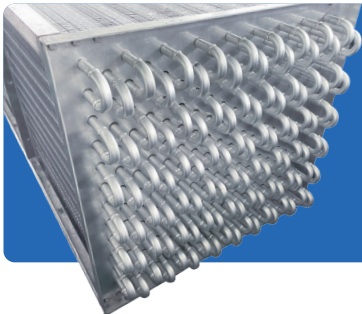
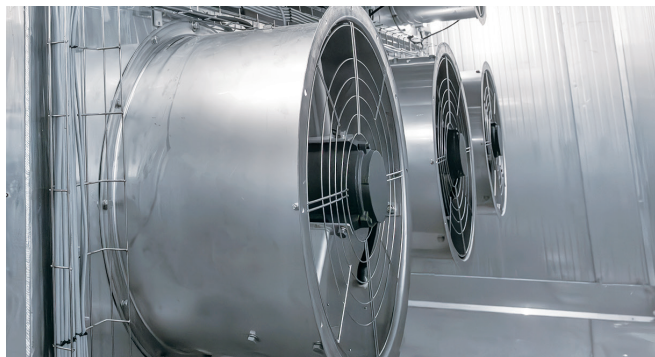


Aquatic product processing

EFFICIENT EVAPORATOR

The evaporator adopts the world's most advanced professional heat exchanger software dynamic simulation design, which further improves the heat exchange efficiency.

The advanced high-pressure water expansion tube technology is adopted to ensure the uniformity of the expansion tube and the fit between the fin and the tube, which improves the heat exchange efficiency.



High flanging fins, fin surface embossing technology, enhance the fin strength and not easy to lodging. The turbulence effect is generated on the surface of the fins, and the heat exchange between the airflow and the fins is more sufficient.

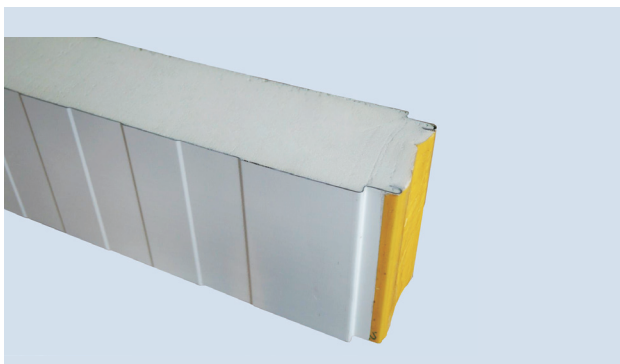
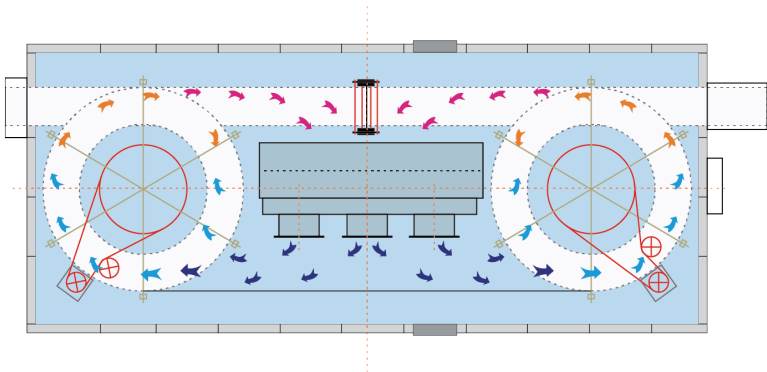
Fin material: aluminum,aluminum-magnesium alloy.

AIR DUCT DESIGN

Efficient heat exchange efficiency design;

The inlet and outlet are equipped with air pressure balance design and related devices to avoid the loss of cooling capacity;

There is a spacious maintenance channel in the storage body, which is convenient for cleaning and maintenance



INSULATION LIBRARY BOARD

Double-sided stainless steel panels, the middle insulation layer adopts PIR foam board, the fire resistance and mechanical properties are better than traditional PU foam board.

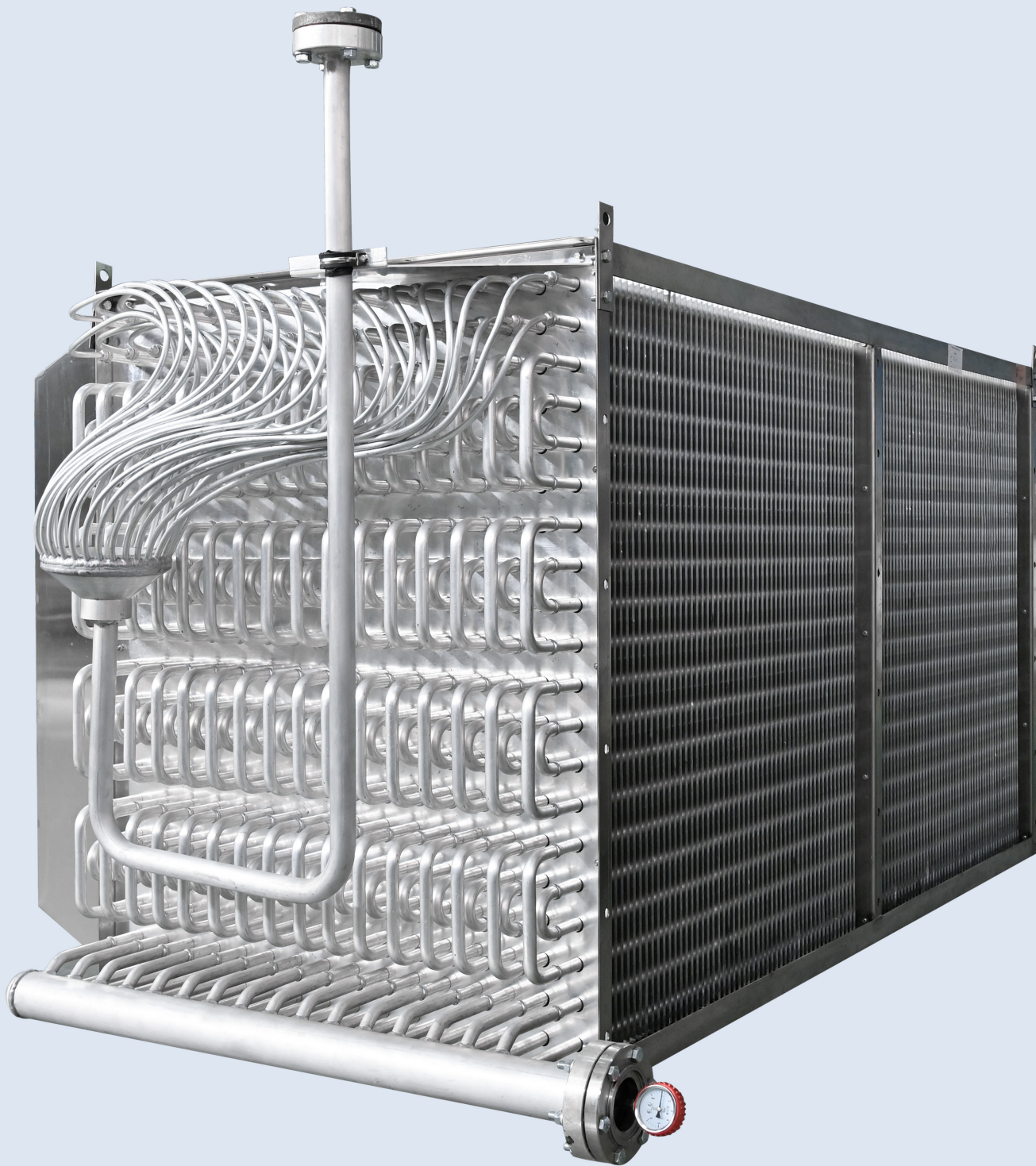
Stainless steel fully welded storage body is optional.



FULLY WELDED BASE PLATE

Modular all-stainless steel welded bottom plate, anti-leakage.

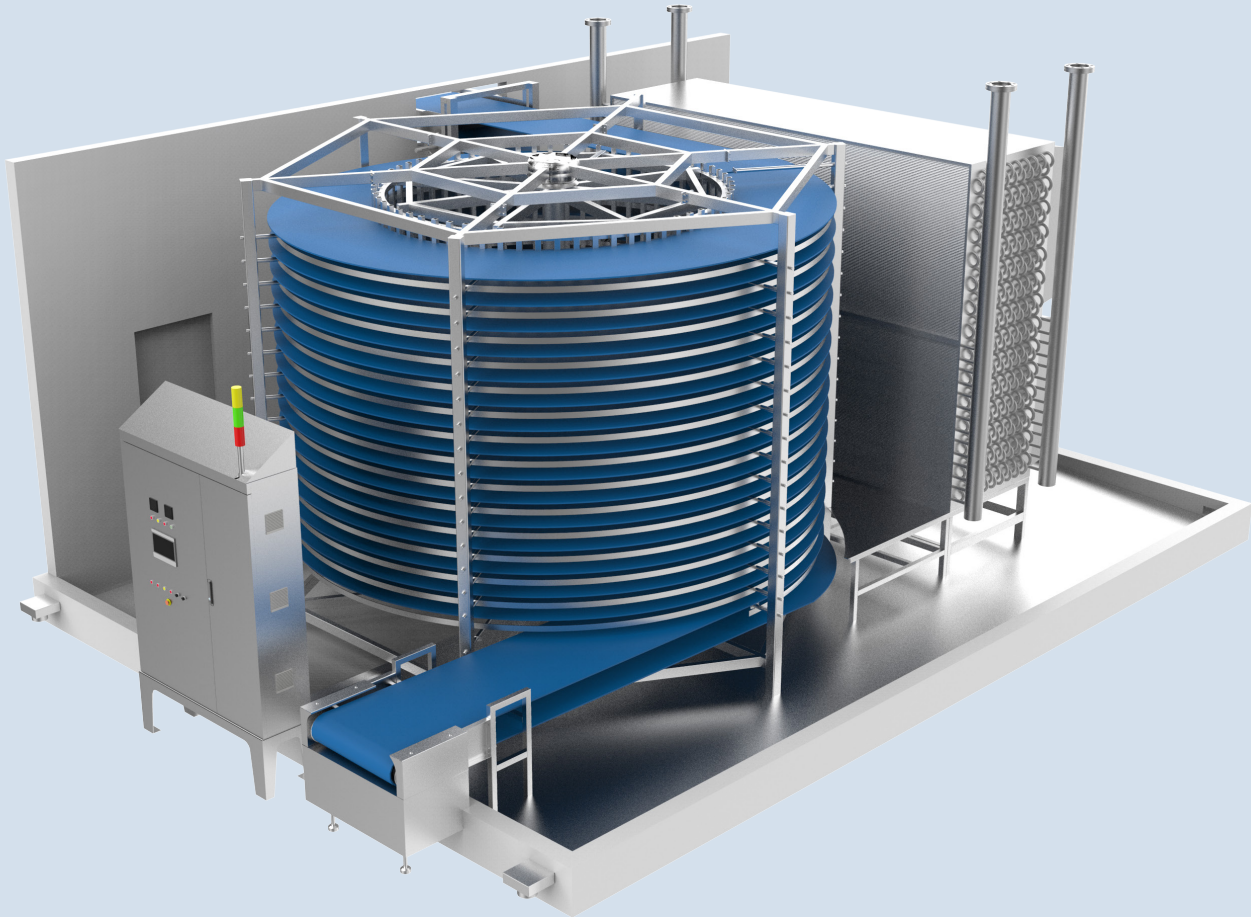
Large slope drainage design, smooth drainage and sewage discharge, easy to clean, meet food processing hygiene standards.



HEAT EXCHANGE SYSTEM WITH EFFICIENT HEAT TRANSFER AND QUICK FREEZING

FOOD QUICK FREEZING SOLUTION

SINGLE SPIRAL FREEZER

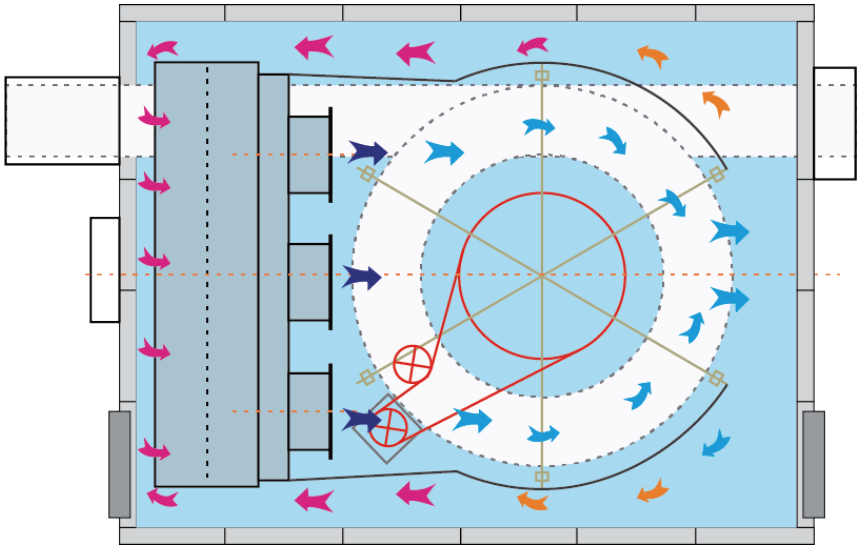


OUTPUT
300-5000
kg/h

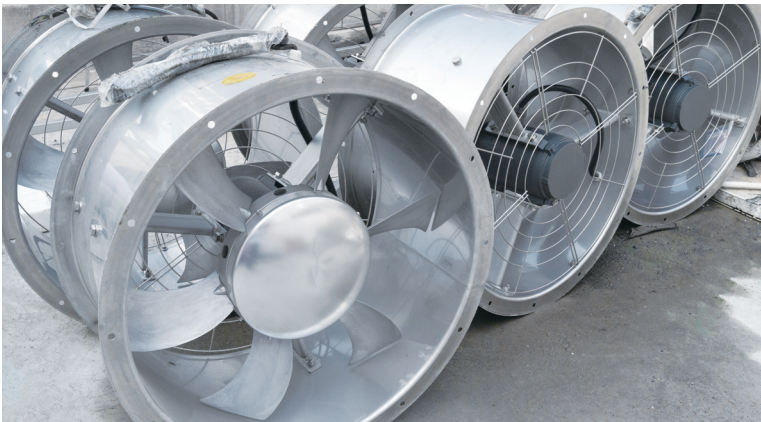


AIR DUCT DESIGN

The low-temperature and high-speed airflow from the evaporator is restricted by the windshield, concentrated in the product area, and smoothly returned to the air tunnel by the windshield to the evaporator. The wind speed loss is minimized and the heat exchange efficiency is improved. The inlet and outlet are equipped with air pressure balance design and related devices to avoid the loss of cooling capacity. There is a spacious maintenance channel in the storage body, which is convenient for equipment maintenance personnel to enter the interior of the equipment for cleaning and maintenance.



AXIAL FAN

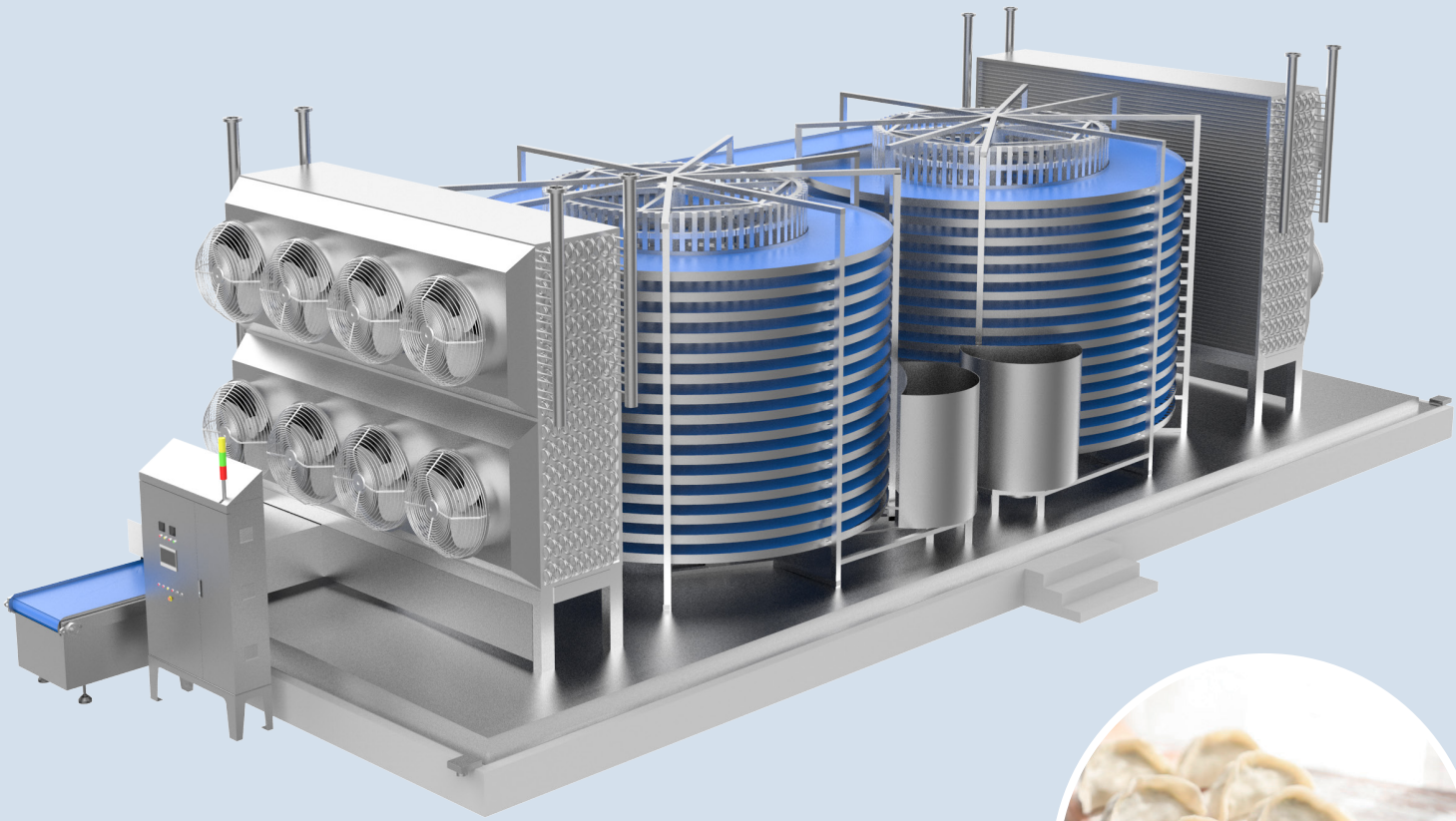


TECHNICAL PARAMETERS

| | | | |
|----------------------|---------------|----------------------|--|
| Structure | Single spiral | Control Panel | PLC touch screen control, 304 stainless steel |
| Cage diameter | 1620-5800mm | Refrigerant | Freon, ammonia, carbon dioxide |
| Layers of mesh belt | Level 6-40 | Evaporator | Aluminum/stainless steel tubes, aluminum/aluminum-magnesium alloy fins |
| Mesh Belt width | 520-1372mm | Defrost method | Water flushing/hot air defrosting |
| Mesh belt material | 304/POM | Freeze/Cooldown Time | Adjustable frequency |
| Feed end length | 500mm | Cleaning method | Mesh belt cleaning/CIP |
| Discharge end length | 500mm | | |

FOOD QUICK FREEZING SOLUTION

DOUBLE SPIRAL FREEZER

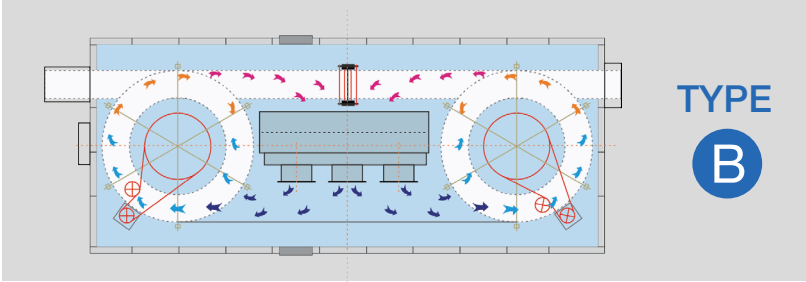
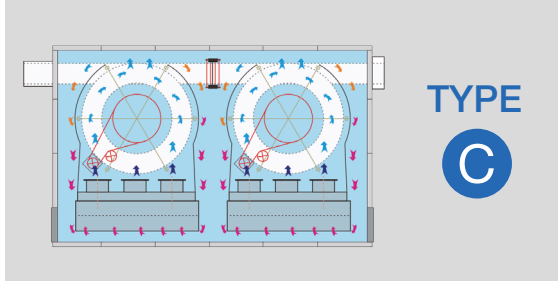
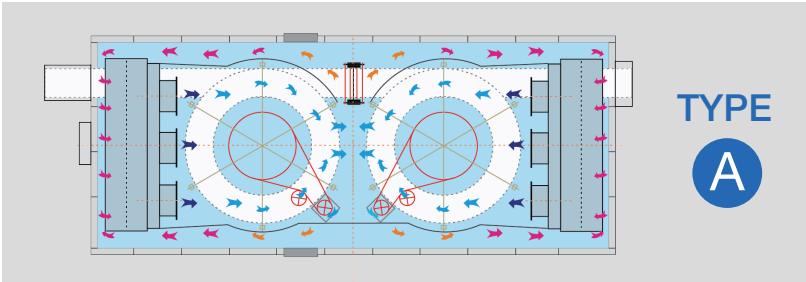


OUTPUT
300-10000
kg/h



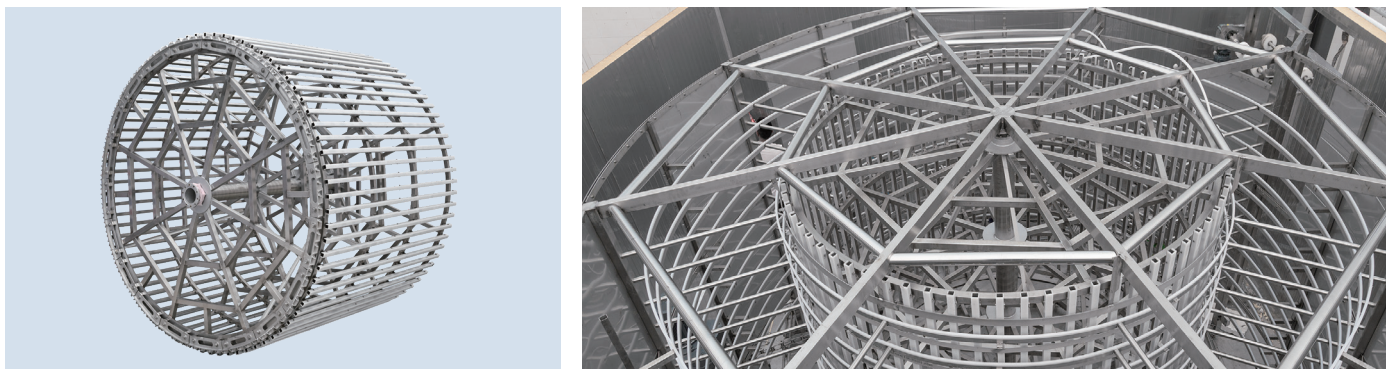
STRUCTURE TYPE

According to the relative position of the inner cage and the evaporator, the layout of the double-screw quick-freezer can be divided into A, B, and C types.



QUICK-FREEZING TUMBLER

The mesh belt and the rotating cage run synchronously, and the modular mesh belt is easy to replace.

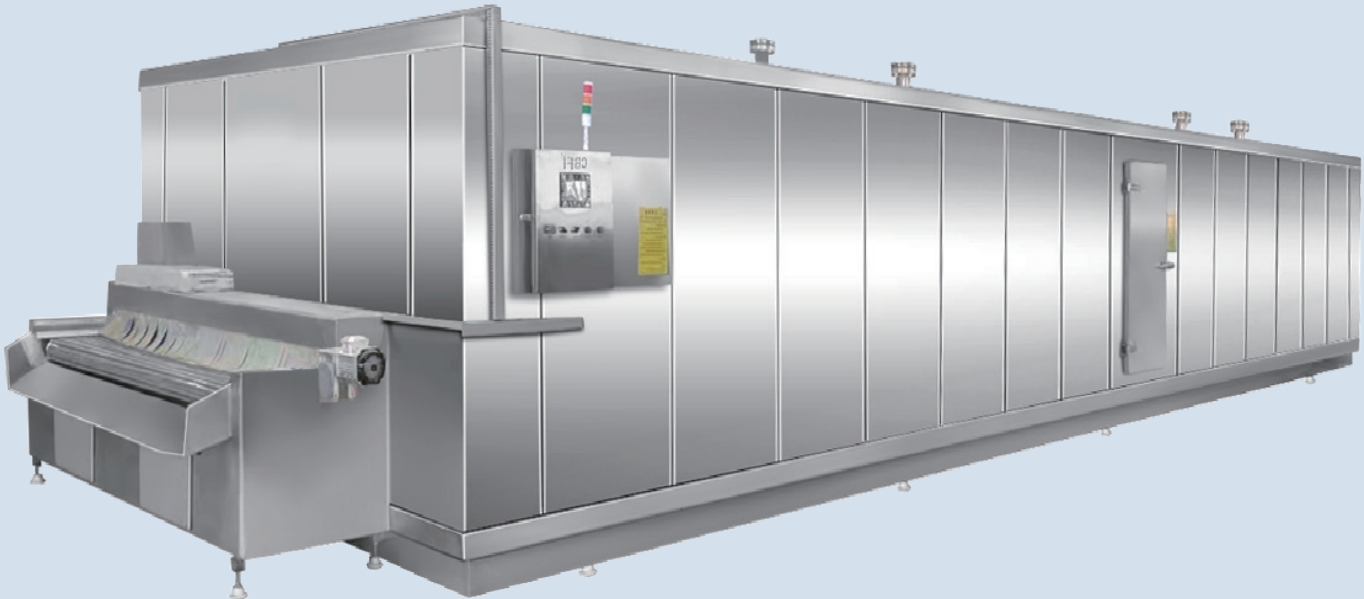


TECHNICAL PARAMETERS

| | | | |
|----------------------|---------------|----------------------|--|
| Structure | Double spiral | Control Panel | PLC touch screen control, 304 stainless steel |
| Cage diameter | 1620-5800mm | Refrigerant | Freon, ammonia, carbon dioxide |
| Layers of mesh belt | Level 6-40 | Evaporator | Aluminum/stainless steel tubes, aluminum/aluminum-magnesium alloy fins |
| Mesh Belt width | 520-1220mm | Defrost method | Water flushing/hot air defrosting |
| Mesh belt material | 304/POM | Freeze/Cooldown Time | Adjustable frequency |
| Feed end length | 500mm | Cleaning method | Mesh belt cleaning/CIP |
| Discharge end length | 500mm | | |

FOOD QUICK FREEZING SOLUTION

TUNNEL FREEZER



OUTPUT
300-2000
kg/h



INSULATION SYSTEM

The heat-insulating storage body is made of stainless steel polyurethane sandwich panel, and the internal polyurethane is filled and foamed by imported high-pressure foaming machine under high pressure.



TRANSMISSION SYSTEM

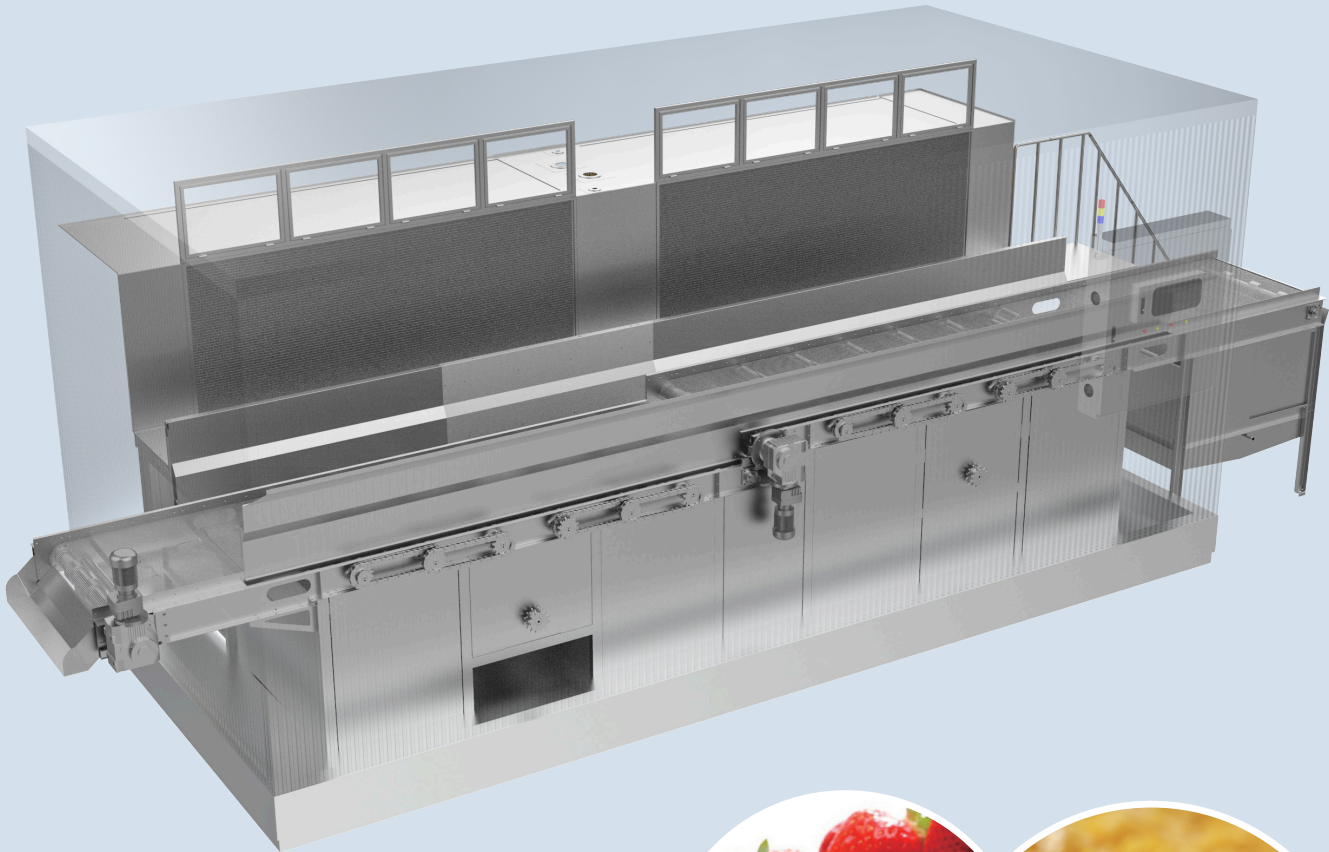
The transmission mesh belt is made of 304 stainless steel spring wire, with a smooth surface and long service life. The imported frequency converter is used to realize stepless speed regulation.

TECHNICAL PARAMETERS

| | | | |
|----------------------|------------------------|----------------------|--|
| Structure | Tunnel quick freezer | Control Panel | PLC touch screen control, 304 stainless steel |
| Mesh Belt width | 1500-4000mm | Refrigerant | Freon, ammonia, carbon dioxide |
| Mesh belt material | 304/POM | Evaporator | Aluminum/stainless steel tubes, aluminum/aluminum-magnesium alloy fins |
| Feed end length | 1500mm | Defrost method | Water flushing/hot air defrosting |
| Discharge end length | 1000mm | Freeze/Cooldown Time | Adjustable frequency |
| Cleaning method | Mesh belt cleaning/CIP | | |

FOOD QUICK FREEZING SOLUTION

FLUIDIZED FREEZER

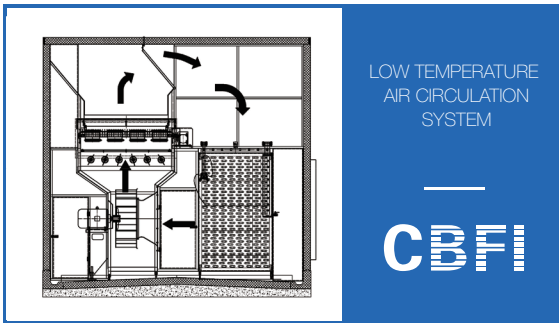


OUTPUT
500-6000
kg/h



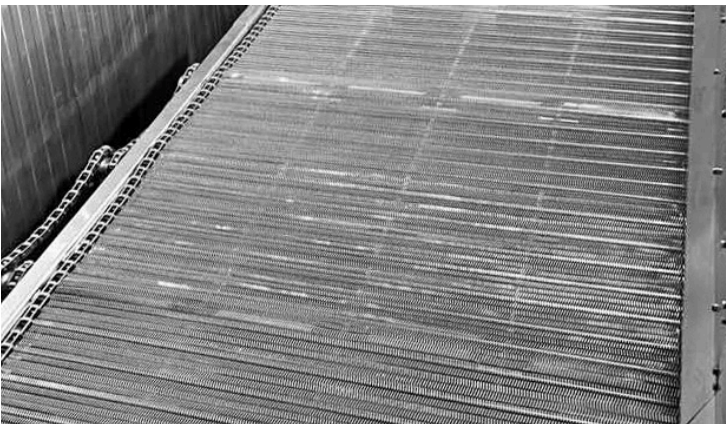
HEAT EXCHANGE SYSTEM

A low-noise centrifugal fan is used to generate a vertically rising high-speed, high-pressure, and low-temperature airflow under the mesh belt, and the food particles are blown by the high-speed airflow to form a suspended state or a semi-suspended state.



TRANSMISSION SYSTEM

The full-fluid quick-freezing machine adopts the "transverse vibration conveying mode". When the first section of the mesh belt is running, it vibrates horizontally under the drive of the connecting rod mechanism; on the side of the fluidized bed conveyor belt, an air pulse device is designed to adjust the side vent door according to different food particles, so that the food particles are suspended in the high-speed air flow during the quick-freezing process.

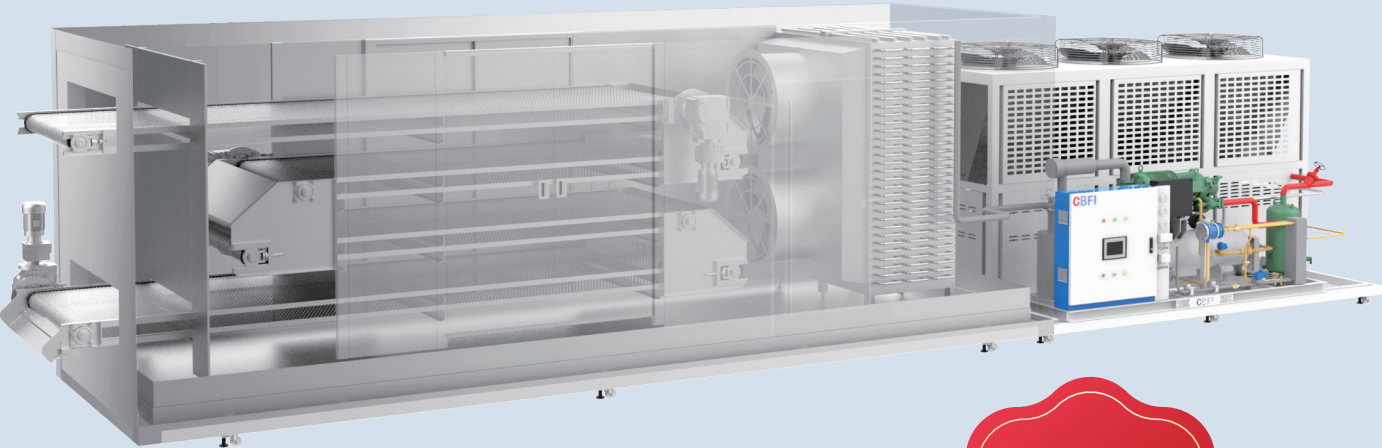


TECHNICAL PARAMETERS

| | | | |
|----------------------|------------------------|----------------------|--|
| Structure | Fluidization | Control Panel | PLC touch screen control, 304 stainless steel |
| Mesh Belt width | 1200mm | Refrigerant | Freon, ammonia, carbon dioxide |
| Mesh belt material | 304/POM | Evaporator | Aluminum/stainless steel tubes, aluminum/aluminum-magnesium alloy fins |
| Feed end length | 1800mm | Defrost method | Water flushing/hot air defrosting |
| Discharge end length | 1000mm | Freeze/Cooldown Time | adjustable frequency |
| Cleaning method | Mesh belt cleaning/CIP | | |

FOOD QUICK FREEZING SOLUTION

INTEGRATED QUICK FREEZER



OUTPUT
100-200
kg/h



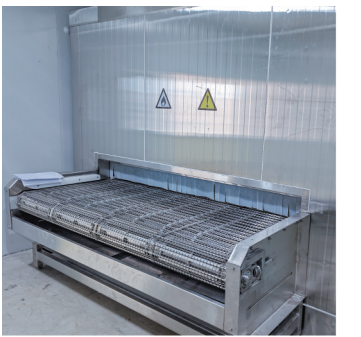
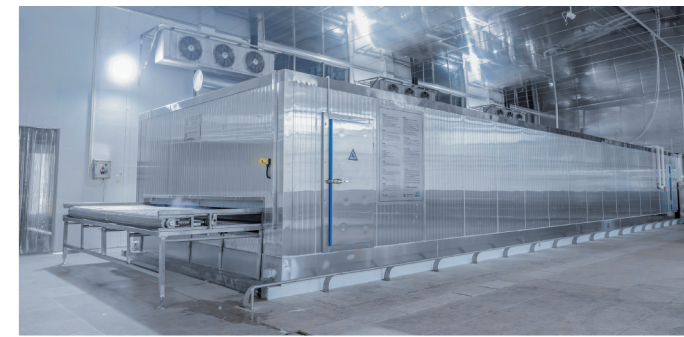
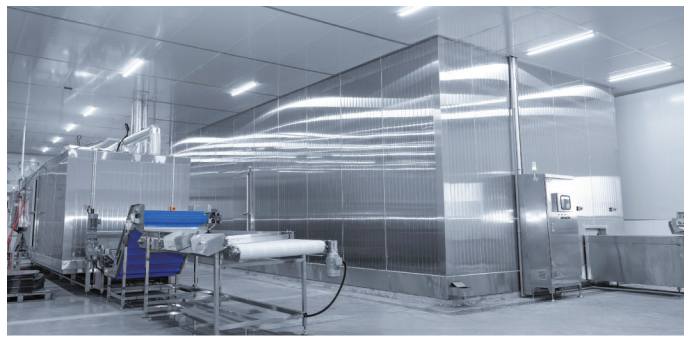
We are committed to food safety.
Our hygienic design ensures safe food
production and minimizes waste



We ensure energy-efficient food processing
through robust construction
stable temperature control
and a low-maintenance
easy-to-clean design



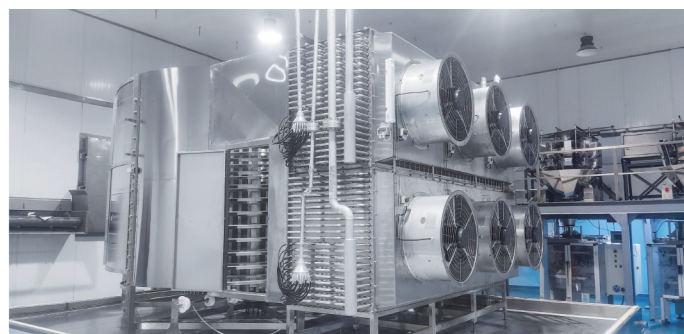
CBFI is dedicated to reducing food waste
enhancing energy efficiency
and creating value for the world



DOUBLE SPIRAL FREEZER CASE



TUNNEL FREEZER CASE



SINGLE SPIRAL FREEZER CASE



FLUIDIZED FREEZER CASE



BRINE FREEZER CASE

TRANSPORTATION INDUSTRY



LOGISTICS COLD CHAIN



AQUATIC PROCESSING



MEDICAL MEDICINE



UNIVERSITY COOPERATION



MEAT POULTRY SLAUGHTER



SNOW ENTERTAINMENT



DAIRY INDUSTRY



FRESH LOGISTICS



FROZEN FOOD



COOKED FOOD PROCESSING



PREPARED DISHES



OVERALL SUPPORTING SOLUTION

Large and medium-sized cold storage supporting equipment - intelligent cold storage source standardized fixed configuration equipment, stable quality. Avoid or reduce welding steps, easy to install. It can be connected to the Internet of Things to realize remote control.



COLD STORAGE EQUIPMENT-OPENING COLD STORAGE UNIT

Customized cold storage unit, professionally designed by a team of refrigeration engineers. Provide overall supporting program. Imported original parts, quality assurance.



MODERN FACTORY

| | | |
|---|---|---|
| 25000 m² Modern production base | 6000 m² welding workshop | 8000 m² Assembly workshop |
| 5000 m² High-end ice production line | 3000 m² R & D workshop | 3000 m² Modern production base |